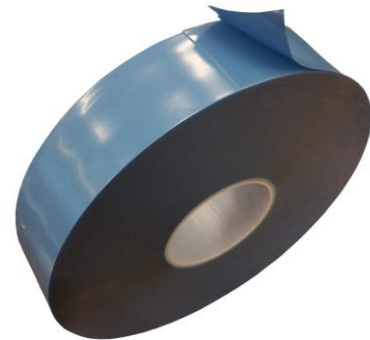


A3200 Clear Double Sided Adhesive Tape is a clear, solid form of acrylic tape that is virtually invisible after being applied. This economical grade is very long lasting and adheres with high bond strength to form long lasting bonds that help eliminate the need for traditional fasteners and work to distribute bonding stress across the entire bonding area.

A3200 Clear Double Sided Adhesive Tape has a strong, acrylic core and fast acting adhesion for a good, quick stick. Once applied, the tapes adhesive strength will only continue to increase over time ensuring good, long lasting performance.

A3200 Clear Double Sided Adhesive Tape has good UV resistance and is able to be used for indoor or outdoor applications.



[View This Product](#)

Applications

Typical applications for this versatile grade of double sided tape include:

- Laminating and mounting security glass panels
- Installing bath and shower hardware and fixtures
- Bonding muntin bars to glass on windows and doors
- Mounting antennas, sensors and cables
- Attaching door handles to glass doors
- Building translucent signage
- Affixing polycarbonate / Lexan / Plex-i-Glass panels to frames
- Card making, scrap booking and craft
- Model making and construction

Technical Details

Property	Value
Backing	Acrylic
Adhesive Type	Acrylic
Colour	Clear
Liner	Blue polyethylene
90% Peel Adhesion	
15 Minutes Paint (Clear Coat)	1239 N/m
72 Hours Paint (Clear Coat)	1593 N/m
72 Hours Stainless Steel	1770 N/m
Dynamic Shear Adhesion (24 Hours)	276 kPa
Continuous Temperature Rating	-35°C to 90°C
Maximum Short-Term Temperature	150°C
Min. Application Temperature	-15°C

Important

The values listed here and the information presented should not be treated as a substitute for specific technical advice. We cannot warrant the products performance or suitability for particular applications.

Date Created: 9/11/2016
 Date Modified: 21/11/2016
 Document # SSD-TDS-SWP000073

Application

For maximum adhesive performance, the surface to which A3200 is being applied should be cleaned and dried. The greater the adhesive-to-surface contact (known as wet-out) the better the adhesive bond strength. Apply the tape to the first surface with the liner on, then firmly press down. Remove the liner, just prior to bonding the surfaces together and apply firm pressure to ensure full contact.

Bond strength achieved depends highly on the substrate surface, application temperature and dwell time. When possible, allow 24 hours dwell time at room temperature before applying weight.

A3200 Clear Double Sided Adhesive Tape should not be used with fabric, coarse concrete, loose paint, rough wallpaper or similar materials.

Available Sizes, Forms and Styles

A3200 Clear Double Sided Adhesive Tape is available from Swift Supplies in the following sizes:

- 1mm Thick x 12mm Wide x 33 Metres Long
- 1mm Thick x 18mm Wide x 33 Metres Long
- 1mm Thick x 24mm Wide x 33 Metres Long

Custom widths, special thicknesses and lengths

We're always happy to help with special requirements. If the size you require for your project isn't listed here please do reach out to us. We'll do our very best to help in any way we can.

Important

The values listed here and the information presented should not be treated as a substitute for specific technical advice. We cannot warrant the products performance or suitability for particular applications.

Date Created: 9/11/2016
Date Modified: 21/11/2016
Document # SSD-TDS-SWP000073